

Package Leaflet: Information for the user

Sebco™

Coal tar solution 12% w/w
Salicylic acid 2% w/w
Sulfur for external use 4% w/w

Read all of this leaflet carefully before you start using this medicine because it contains important information for you. Always use this medicine exactly as described in this leaflet or as your doctor, pharmacist or nurse have told you. If you get any side effects, talk to your doctor, pharmacist or nurse. This includes any possible side effects not listed in this leaflet. See section 4.

What is in this leaflet:

1. What Sebco is and what it is used for
2. What you need to know before you use Sebco
3. How to use Sebco
4. Possible side effects
5. How to store Sebco
6. Contents of the pack and other information

1. WHAT SEBCO IS AND WHAT IT IS USED FOR

Sebco is an ointment containing coal tar, salicylic acid and sulfur mixed in coconut oil. The mixture of coal tar, salicylic acid and sulfur reduces itch, helps remove scaly skin and has antiseptic properties. Sebco is used in the treatment of skin diseases which cause dry scaly skin on the scalp. These include psoriasis, eczema, seborrhoeic dermatitis and dandruff.

2. BEFORE YOU USE SEBCO

Do not use Sebco if:

- You know you are allergic to any of the ingredients in Sebco (see section 6).
- You have an acute infection of an area of skin. Swelling, pain, redness and maybe pus are signs of this.

Make sure your doctor or pharmacist knows if any of the above applies to you.

Take special care with Sebco:

- Avoid contact with the mouth, mucous membranes, eyes and any areas of broken skin.
- Sebco can stain clothes and jewellery. Remove or protect these before application.

Other medicines and Sebco

Tell your doctor or pharmacist if you are taking, have recently taken or might take any other medicines.

Pregnancy and breast-feeding

Ask your doctor or pharmacist for advice before using this, or any other medicine when you are pregnant, think you may be pregnant, are planning to become pregnant, or are breast-feeding. Your doctor will decide whether it is in your best interests to use Sebco in these circumstances.

Driving and using machines

Sebco should not affect your ability to drive or use machinery.

Sebco contains cetostearyl alcohol

Cetostearyl alcohol may cause a sensitivity rash (e.g. contact dermatitis).

Do not smoke or go near naked flames - risk of severe burns. Fabric (clothing, bedding, dressings etc) that has been in contact with this product burns more easily and is a serious fire hazard.

Washing clothing and bedding may reduce product build-up but not totally remove it.

3. HOW TO USE SEBCO

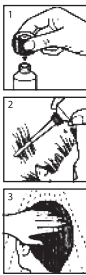
Sebco should be used only on your skin.

Always use this medicine exactly as described in this leaflet or as your doctor, pharmacist or nurse has told you. Check with your doctor, pharmacist or nurse if you are not sure.

When first opening Sebco do not use if the tube membrane is already broken.

In severe scaly scalp conditions it is usually necessary to apply Sebco daily for 3-7 days until control has been obtained.

With mild scaliness use intermittently as necessary, e.g. once a week.



[Illustration 1] Pierce the tube membrane by inverting the cap. Affix the scalp applicator to the threaded portion of the tube.

[Illustration 2] Part the hair and apply a thin ribbon of Sebco to the affected areas of the scalp. Take care to avoid contact with the eyes. Gently rub in the ointment and leave in contact with scalp for approximately one hour. Wash the hands immediately afterwards.

[Illustration 3] After one hour remove the ointment by showering or rinsing with warm water and shampoo. If after the first week there is no improvement or after 4 weeks symptoms persist, consult your doctor. **If you accidentally get some into your eyes wash it out immediately with plenty of cold tap water.** If irritation of the eyes develops consult your doctor or pharmacist.

Sebco is not recommended for children under 6 years of age.

If you use more Sebco than you should or if you accidentally swallow some Sebco

If you use more Sebco than you should or if you accidentally swallow some Sebco contact your nearest hospital casualty department or tell your doctor immediately.

If you forget to use Sebco

If it is within the day, apply when you remember. If it is the next day do not use a double application, just continue as before.

If you have any further questions on the use of this product ask your doctor or pharmacist.

4. POSSIBLE SIDE EFFECTS

Like all medicines Sebco can sometimes cause side effects, although not everybody gets them. The following side effects have been reported:

- Irritation of the skin
- Inflammation of the hair follicles causing soreness and small pus filled spots around the base of the hairs
- Acne like eruptions
- Discolouration of skin and hair
- Hair loss
- Rarely, a sensitivity rash to sunlight
- If you have asthma or if anyone in your family is allergic to aspirin, Sebco may cause difficulty in breathing or a tightness of your chest. This is very rare.

Reporting of side effects

If you get any side effects talk to your doctor, pharmacist or nurse. This includes any possible side effects not listed in this leaflet. You can also report side effects directly via the Yellow Card Scheme website: www.mhra.gov.uk/yellowcard or search for MHRA Yellow Card in the Google Play or Apple App Store. By reporting side effects you can help provide more information on the safety of this medicine.

5. HOW TO STORE SEBCO

Keep out of the sight and reach of children. Your ointment could harm them.

Do not use your ointment after the expiry date which is stated on the carton. The expiry date refers to the last day of that month.

Keep your medicine at room temperature, in a dry place, and not above 25°C.

Discard tube no later than 4 weeks after opening.

Do not throw away medicines via wastewater or household waste. Ask your pharmacist how to throw away medicines you no longer use. These measures will help to protect the environment.

6. CONTENTS OF THE PACK AND OTHER INFORMATION

The active ingredients are coal tar 12% w/w, salicylic acid 2% w/w and sulfur for external use 4% w/w. The other ingredients are coconut oil, white soft paraffin, cetostearyl alcohol, glycerol, liquid paraffin, polyoxyethylene glycerol monostearate, hard paraffin.

What Sebco looks like and contents of pack

Sebco is a buff coloured ointment. It is licensed for sale in tubes of 5, 15, 40 and 100 grams. Availability may be limited in some sizes.

Marketing authorisation holder

Derma UK Ltd, The Toffee Factory,
Lower Steenbergs Yard, Ouseburn,
Newcastle upon Tyne NE1 2DF, UK.

Manufacturer

Ovelle Limited, Coes Road, Dundalk, Co. Louth, Ireland.
'Sebco' is a registered trademark.

This leaflet was last revised in November 2022. 9491 rev 002